

TZM 11 Engineering Office Ltd.

HIM

Standard hydraulic cylinders

2011-2

TZM 11 Engineering Office Ltd.

Features

- Nominal pressure is 250 bar
- Connecting dimensions by ISO 6022
- Bore from 50 to 160mm
- Stroke from 0 to 1500mm
- Cromax 482 excellent chromed piston rod
- Bored and honed H8 cylinder bore, $Rz \leq 4\mu\text{m}$
- Quality, high durability sealings
- Each cylinder is factory tested
- Work fluid: ISO VG46, or ISO VG22, or ISO VG68 grade hydraulic fluid

Application field

General purpose cylinders (for production special purpose machines), holding cylinders, for agricultural machines, for mobile hydraulics, fork lifts and other machines.

Ordering

HIM- _ _ - _ - _ - _

HIM-type code Bore(mm)-Rod diameter(mm)-Stroke(mm)-supplementary position

Example:

80mm bore, 100mm stroke, 50mm rod diameter circular front flange type cylinder's ordering code:

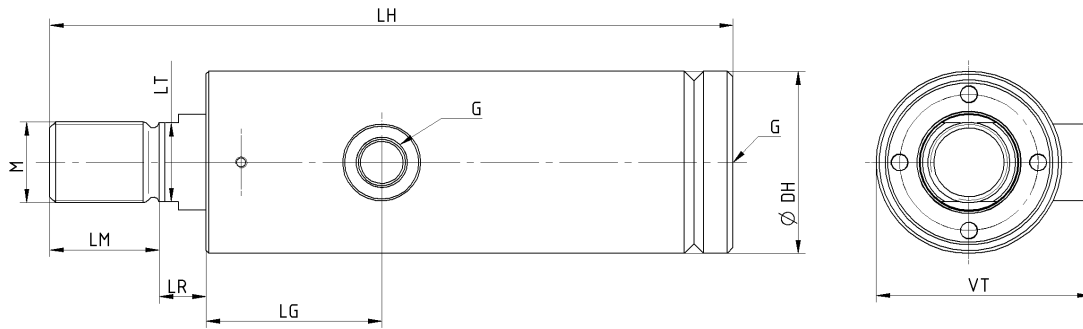
HIM-P 80-50-100

100mm bore, 200mm stroke, 63mm rod diameter, intermediate trunnion type, trunnion position offset 20mm (from 180mm base position) cylinder's ordering code:

HIM-K 100-63-200-20

TZM 11 Engineering Office Ltd.

HIM-A basic type



Mounting dimensions

Bore Ø	Rod Ø	M	DH	LH	LG	LM	LR	LT	G	VT
50	32	M27X2	65	209 + x	90	36	18	27	G1/2	79
50	36	M27X2	65	209 + x	90	36	18	30	G1/2	79
63	40	M33X2	78	221 + x	90	45	21	32	G1/2	92
63	45	M33X2	78	221 + x	90	45	21	36	G1/2	92
80	50	M42X2	95	245 + x	90	56	24	41	G3/4	109
80	56	M42X2	95	245 + x	90	56	24	46	G3/4	109
100	63	M48X2	120	265 + x	90	63	27	50	G3/4	134
100	70	M48X2	120	265 + x	90	63	27	60	G3/4	134
125	80	M64X3	150	301 + x	90	85	31	65	G3/4	164
125	90	M64X3	150	301 + x	90	85	31	75	G3/4	164
140	90	M72X3	170	306 + x	90	90	31	75	G3/4	184
140	100	M72X3	170	306 + x	90	90	31	85	G3/4	184
160	100	M80X3	190	315 + x	90	95	35	85	G3/4	204
160	110	M80X3	190	315 + x	90	95	35	95	G3/4	204

x means the stroke length

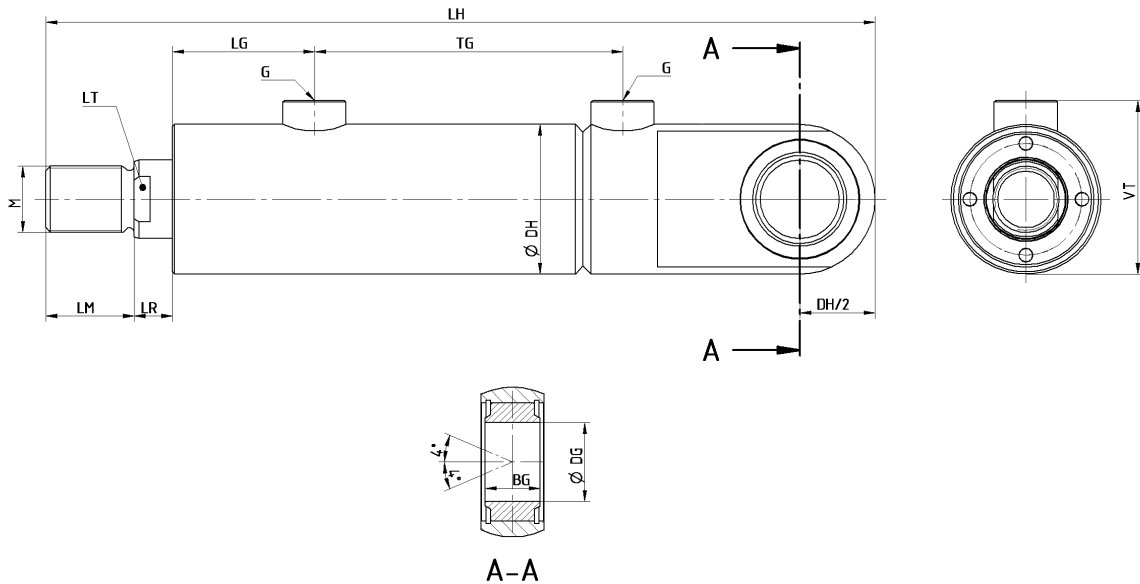
Address: Hungary, H-6722 Szeged, Moszkvai Blvd. 20/a III/9
 VAT: HU23542114
 IBAN: FHB bank, 18203088-06012677-40010019

internet: <http://tzm11.atw.hu>

Oldal 3/9

TZM 11 Engineering Office Ltd.

HIM-G spherical bearing type



Mounting dimensions

Bore Ø	Rod Ø	M	DH	LH	LG	LM	LR	LT	DG	BG	G	VT	TG
50	32	M27X2	65	340 + x	90	36	18	27	35	32	G1/2	79	74 + x
50	36	M27X2	65	340 + x	90	36	18	30	35	32	G1/2	79	74 + x
63	40	M33X2	78	371 + x	90	45	21	32	40	40	G1/2	92	74 + x
63	45	M33X2	78	371 + x	90	45	21	36	40	40	G1/2	92	74 + x
80	50	M42X2	95	410 + x	90	56	24	41	50	50	G3/4	109	80 + x
80	56	M42X2	95	410 + x	90	56	24	46	50	50	G3/4	109	80 + x
100	63	M48X2	120	444 + x	90	63	27	50	70	63	G3/4	134	80 + x
100	70	M48X2	120	444 + x	90	63	27	60	70	63	G3/4	134	80 + x
125	80	M64X3	150	507 + x	90	85	31	65	80	80	G3/4	164	80 + x
125	90	M64X3	150	507 + x	90	85	31	75	80	80	G3/4	164	80 + x
140	90	M72X3	170	547 + x	90	90	31	75	90	90	G3/4	184	80 + x
140	100	M72X3	170	547 + x	90	90	31	85	90	90	G3/4	184	80 + x
160	100	M80X3	190	567 + x	90	95	35	85	100	100	G3/4	204	80 + x
160	110	M80X3	190	567 + x	90	95	35	95	100	100	G3/4	204	80 + x

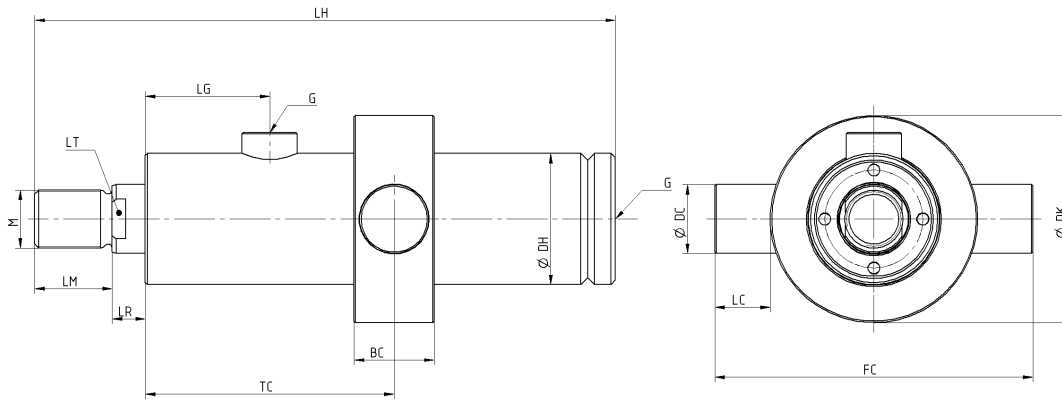
x means the stroke length

Address: Hungary, H-6722 Szeged, Moszkvai Blvd. 20/a III/9
 VAT: HU23542114
 IBAN: FHB bank, 18203088-06012677-40010019

internet: <http://tzm11.atw.hu>

TZM 11 Engineering Office Ltd.

HIM-K intermediate trunnion type



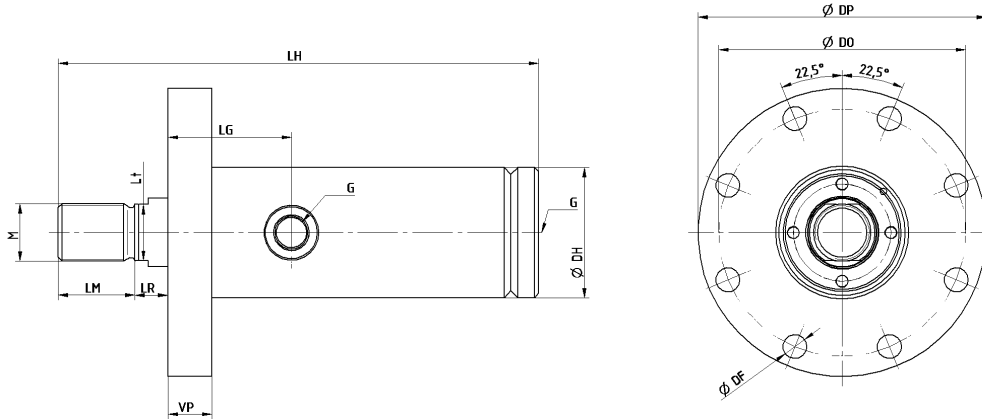
Mounting dimensions

Bore Ø	Rod Ø	M	DH	LH	LG	LM	LR	LT	G	TC	BC	DK	FC	LC	DC
50	32	M27X2	65	209 + x	90	36	18	27	G1/2	180 + y	38	102	152	25	32
50	36	M27X2	65	209 + x	90	36	18	30	G1/2	180 + y	38	102	152	25	32
63	40	M33X2	78	221 + x	90	45	21	32	G1/2	180 + y	48	120	184	32	40
63	45	M33X2	78	221 + x	90	45	21	36	G1/2	180 + y	48	120	184	32	40
80	50	M42X2	95	245 + x	90	56	24	41	G3/4	180 + y	58	150	230	40	50
80	56	M42X2	95	245 + x	90	56	24	46	G3/4	180 + y	58	150	230	40	50
100	63	M48X2	120	265 + x	90	63	27	50	G3/4	180 + y	78	175	275	50	63
100	70	M48X2	120	265 + x	90	63	27	60	G3/4	180 + y	78	175	275	50	63
125	80	M64X3	150	301 + x	90	85	31	65	G3/4	180 + y	98	220	346	63	80
125	90	M64X3	150	301 + x	90	85	31	75	G3/4	180 + y	98	220	346	63	80
140	90	M72X3	170	306 + x	90	90	31	75	G3/4	180 + y	118	240	380	70	90
140	100	M72X3	170	306 + x	90	90	31	85	G3/4	180 + y	118	240	380	70	90
160	100	M80X3	190	315 + x	90	95	35	85	G3/4	180 + y	128	270	430	80	100
160	110	M80X3	190	315 + x	90	95	35	95	G3/4	180 + y	128	270	430	80	100

x means the stroke length y means the trunnion offset position (note the full length of the cylinder!)

TZM 11 Engineering Office Ltd.

HIM-P circular front flange type



Mounting dimensions

Bore Ø	Rod Ø	M	DH	LH	LG	LM	LR	LT	G	DP	DO	DF	VP
50	32	M27X2	65	209 + x	90	36	18	27	G1/2	155	132	13,5	25
50	36	M27X2	65	209 + x	90	36	18	30	G1/2	155	132	13,5	25
63	40	M33X2	78	221 + x	90	45	21	32	G1/2	175	150	13,5	28
63	45	M33X2	78	221 + x	90	45	21	36	G1/2	175	150	13,5	28
80	50	M42X2	95	245 + x	90	56	24	41	G3/4	210	180	17,5	32
80	56	M42X2	95	245 + x	90	56	24	46	G3/4	210	180	17,5	32
100	63	M48X2	120	265 + x	90	63	27	50	G3/4	250	212	22	36
100	70	M48X2	120	265 + x	90	63	27	60	G3/4	250	212	22	36
125	80	M64X3	150	301 + x	90	85	31	65	G3/4	290	250	22	40
125	90	M64X3	150	301 + x	90	85	31	75	G3/4	290	250	22	40
140	90	M72X3	170	306 + x	90	90	31	75	G3/4	325	280	26	40
140	100	M72X3	170	306 + x	90	90	31	85	G3/4	325	280	26	40
160	100	M80X3	190	315 + x	90	95	35	85	G3/4	360	315	26	45
160	110	M80X3	190	315 + x	90	95	35	95	G3/4	360	315	26	45

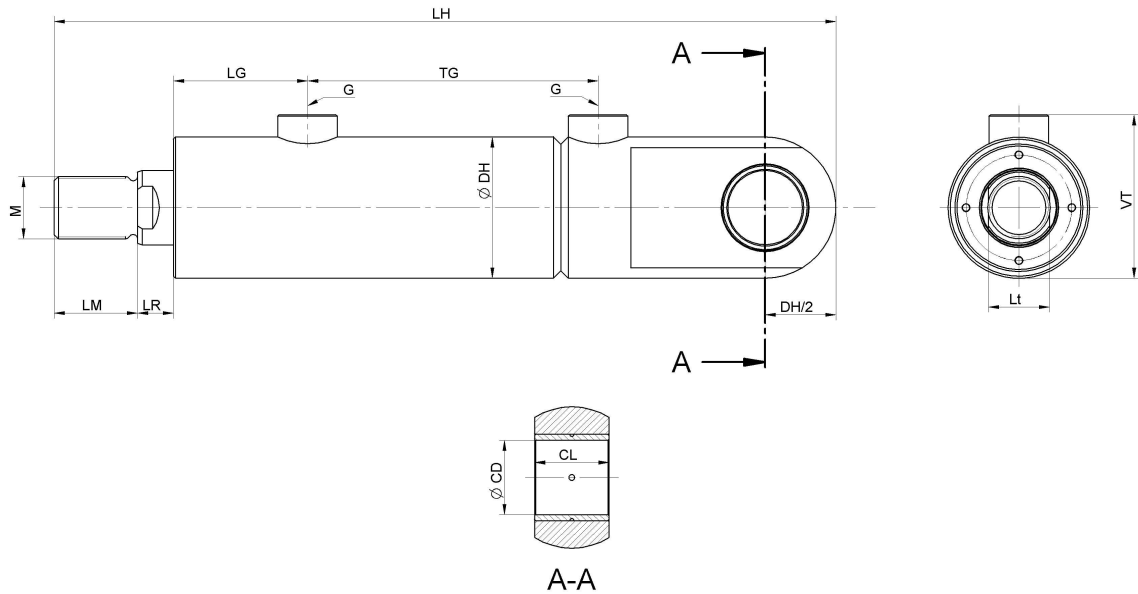
x means the stroke length

Address: Hungary, H-6722 Szeged, Moszkvai Blvd. 20/a III/9
 VAT: HU23542114
 IBAN: FHB bank, 18203088-06012677-40010019

internet: <http://tzm11.atw.hu>

TZM 11 Engineering Office Ltd.

HIM-S plain eye type



Mounting dimensions

Bore \emptyset	Rod \emptyset	M	DH	LH	LG	LM	LR	LT	CD	CL	G	VT	TG
50	32	M27X2	65	340 + x	90	36	18	27	32	32	G1/2	79	74 + x
50	36	M27X2	65	340 + x	90	36	18	30	32	32	G1/2	79	74 + x
63	40	M33X2	78	371 + x	90	45	21	32	40	40	G1/2	92	74 + x
63	45	M33X2	78	371 + x	90	45	21	36	40	40	G1/2	92	74 + x
80	50	M42X2	95	410 + x	90	56	24	41	50	50	G3/4	109	80 + x
80	56	M42X2	95	410 + x	90	56	24	46	50	50	G3/4	109	80 + x
100	63	M48X2	120	444 + x	90	63	27	50	63	63	G3/4	134	80 + x
100	70	M48X2	120	444 + x	90	63	27	60	63	63	G3/4	134	80 + x
125	80	M64X3	150	507 + x	90	85	31	65	80	80	G3/4	164	80 + x
125	90	M64X3	150	507 + x	90	85	31	75	80	80	G3/4	164	80 + x
140	90	M72X3	170	547 + x	90	90	31	75	90	90	G3/4	184	80 + x
140	100	M72X3	170	547 + x	90	90	31	85	90	90	G3/4	184	80 + x
160	100	M80X3	190	567 + x	90	95	35	85	100	100	G3/4	204	80 + x
160	110	M80X3	190	567 + x	90	95	35	95	100	100	G3/4	204	80 + x

x means the stroke length

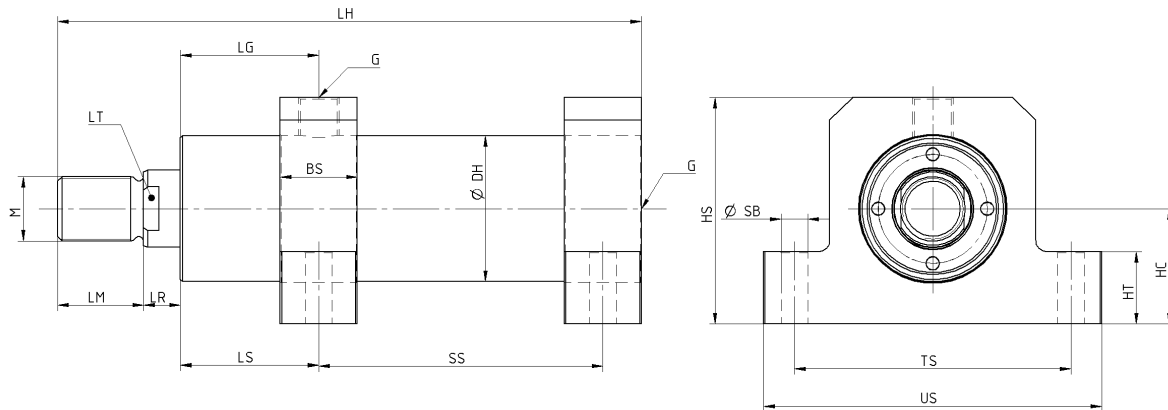
Address: Hungary, H-6722 Szeged, Moszkvai Blvd. 20/a III/9
 VAT: HU23542114
 IBAN: FHB bank, 18203088-06012677-40010019

internet: <http://tzm11.atw.hu>

Oldal 7/9

TZM 11 Engineering Office Ltd.

HIM-T side lug type



Mounting dimensions

Bore Ø	Rod Ø	M	DH	LH	LG	LS	LM	LR	LT	G	SS	HS	US	TS	HT	HC	SB
50	32	M27X2	65	239 + x	90	90	36	18	27	G1/2	77,5 + x	106	155	130	37	55	11
50	36	M27X2	65	239 + x	90	90	36	18	30	G1/2	77,5 + x	106	155	130	37	55	11
63	40	M33X2	78	251 + x	90	90	45	21	32	G1/2	75,0 + x	125	180	150	42	65	13,5
63	45	M33X2	78	251 + x	90	90	45	21	36	G1/2	75,0 + x	125	180	150	42	65	13,5
80	50	M42X2	95	265 + x	90	90	56	24	41	G3/4	70,0 + x	147,5	220	180	47	75	17,5
80	56	M42X2	95	265 + x	90	90	56	24	46	G3/4	70,0 + x	147,5	220	180	47	75	17,5
100	63	M48X2	120	275 + x	90	80	63	27	50	G3/4	75,0 + x	175	255	210	57	90	22
100	70	M48X2	120	275 + x	90	80	63	27	60	G3/4	75,0 + x	175	255	210	57	90	22
125	80	M64X3	150	301 + x	90	80	85	31	65	G3/4	70,0 + x	208	305	255	67	105	26
125	90	M64X3	150	301 + x	90	80	85	31	75	G3/4	70,0 + x	208	305	255	67	105	26
140	90	M72X3	170	306 + x	90	80	90	31	75	G3/4	70,0 + x	228	350	290	72	115	30
140	100	M72X3	170	306 + x	90	80	90	31	85	G3/4	70,0 + x	228	350	290	72	115	30
160	100	M80X3	190	315 + x	90	80	95	35	85	G3/4	70,0 + x	267,5	400	330	77	135	33
160	110	M80X3	190	315 + x	90	80	95	35	95	G3/4	70,0 + x	267,5	400	330	77	135	33

x means the stroke length

Different SS value is possible!

Address: Hungary, H-6722 Szeged, Moszkvai Blvd. 20/a III/9
 VAT: HU23542114
 IBAN: FHB bank, 18203088-06012677-40010019

internet: <http://tzm11.atw.hu>

TZM 11 Engineering Office Ltd.

Contents

Features.....	2
Application field.....	2
Ordering.....	2
HIM-A basic type.....	3
HIM-G spherical bearing type.....	4
HIM-K intermediate trunnion type.....	5
HIM-P circular front flange type.....	6
HIM-S plain eye type.....	7
HIM-T side lug type.....	8